

Thank you for purchasing a hood protector.

Care Instructions

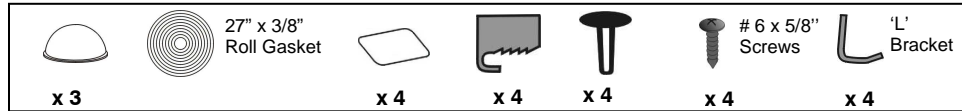
- Clean the protector with a mild soap and water solution or plastic cleaner only.
- Periodically check to make sure all the hardware is in place and the protector is secure.

Attention!



Do not use chemicals or solvents. Avoid using automatic car washes. Do not pull on the protector when opening or closing the hood.

Hardware Kit



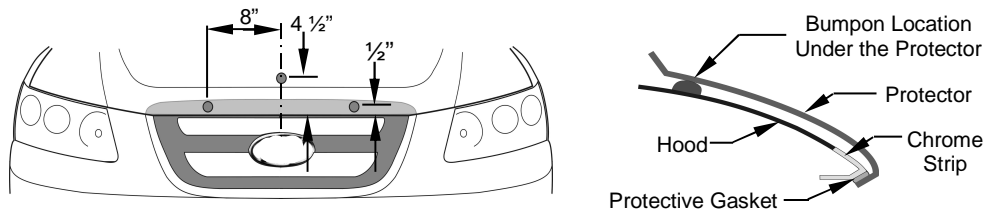
Tools Required



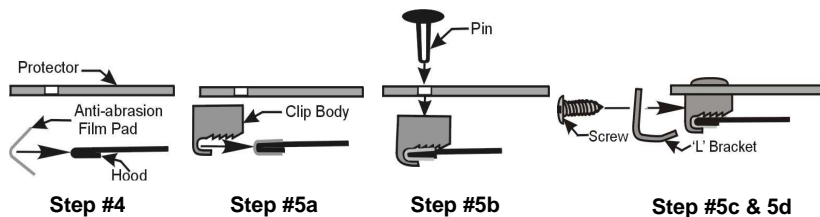
Installation Instruction

1. Be sure that the hood is clean and dry inside and out. Release the hood, but do not open it.
  2. Install the bumpsons as shown in Illustration #1. **Attention: The bumpsons must be installed on the hood not the protector!!!!** If the bumpsons are installed on the protector, they will wear through the paint.
  3. Peel the protective backing from the roll of gasket material and attach to the underside of chrome part on the leading edge of the hood as shown in illustration #1.
  4. Peel and fold an anti-abrasion film pad in half over the edge of the hood, underneath each of the (2) two holes in the protector. See Illustration #2 - Step 4.
  - 5a) Place a clip over each of the anti-abrasion film pads on the edge of the hood as shown below in Illustration #2 – Step 5a.
  - b) Insert a pin through the protector into each of the clips. See Illustration #2 – Step 5b.
  - c) Insert a #6 x 5/8" screw through an 'L'- bracket and into the clip. See Illustration #2 – Step 5c & 5d.
  - d) Make sure all the components are well seated together; the protector is centered on the hood, and then tighten the screws into the clips.
  6. Repeat steps #4 and #5 for the other two (2) holes.
  7. On some vehicles it may be necessary to adjust the hood bumpers and/or latch for proper clearance.
- Note: Do not pull on the protector when opening or closing the hood.**

**Illustration # 1: Bumpon Location**



**Illustration # 2: Clip Configuration – Patent No. 6,892,427**



Thank you for purchasing a hood protector.

Care Instructions

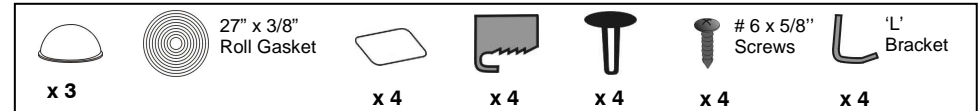
- Clean the protector with a mild soap and water solution or plastic cleaner only.
- Periodically check to make sure all the hardware is in place and the protector is secure.

Attention!



Do not use chemicals or solvents. Avoid using automatic car washes. Do not pull on the protector when opening or closing the hood.

Hardware Kit



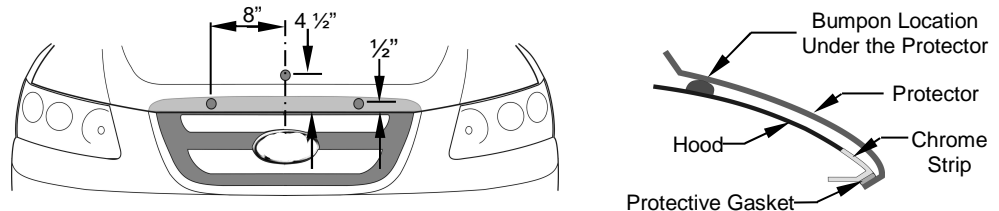
Tools Required



Installation Instruction

1. Be sure that the hood is clean and dry inside and out. Release the hood, but do not open it.
  2. Install the bumpsons as shown in Illustration #1. **Attention: The bumpsons must be installed on the hood not the protector!!!!** If the bumpsons are installed on the protector, they will wear through the paint.
  3. Peel the protective backing from the roll of gasket material and attach to the underside of chrome part on the leading edge of the hood as shown in illustration #1.
  4. Peel and fold an anti-abrasion film pad in half over the edge of the hood, underneath each of the (2) two holes in the protector. See Illustration #2 - Step 4.
  - 5a) Place a clip over each of the anti-abrasion film pads on the edge of the hood as shown below in Illustration #2 – Step 5a.
  - b) Insert a pin through the protector into each of the clips. See Illustration #2 – Step 5b.
  - c) Insert a #6 x 5/8" screw through an 'L'- bracket and into the clip. See Illustration #2 – Step 5c & 5d.
  - d) Make sure all the components are well seated together; the protector is centered on the hood, and then tighten the screws into the clips.
  6. Repeat steps #4 and #5 for the other two (2) holes.
  7. On some vehicles it may be necessary to adjust the hood bumpers and/or latch for proper clearance.
- Note: Do not pull on the protector when opening or closing the hood.**

**Illustration # 1: Bumpon Location**



**Illustration # 2: Clip Configuration – Patent No. 6,892,427**

